



DIR  
A  
V  
A-V  
A-V  
T

## The Importance of Master Re-Calibration

## Why do we need to re-calibrate the Master?

The Master supplied with your Gauging System is extremely important for the reliability of your measurement results.

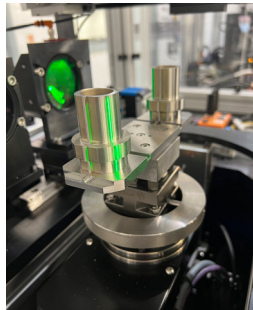
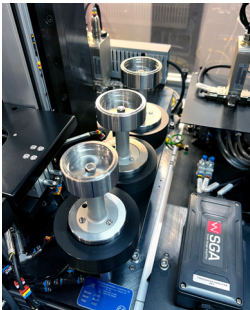
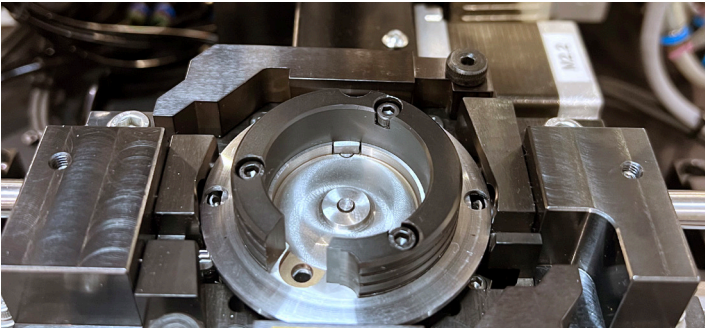
As the original equipment manufacturer Torus Measurement Systems recommends that your Master is re-calibrated annually to continually assess for wear, damage and integrity. This ensures that your product quality is not compromised.

Torus are a leading manufacturer in gauging systems for the packaging industry worldwide, with the expertise to understand the functionality and critical features of your master.



## Torus Measurement Systems Master Calibration Service offers:-

- ISO 17025 - UKAS Certification (In-line with OEM design specification)
- ISO 9001 (BSI approved Quality Management System)
- Continual commitment to quality
- Value for money
- Quick turn-around offering minimum disruption
- Annual re-call notification (6 weeks before your master is due for calibration a notification will be sent to your preferred contact)



**Contact Torus Metrology for  
more information:**

**[tms.inspection@torus-group.com](mailto:tms.inspection@torus-group.com)**

**+441952 210 020**

**[www.torus-group.com](http://www.torus-group.com)**

